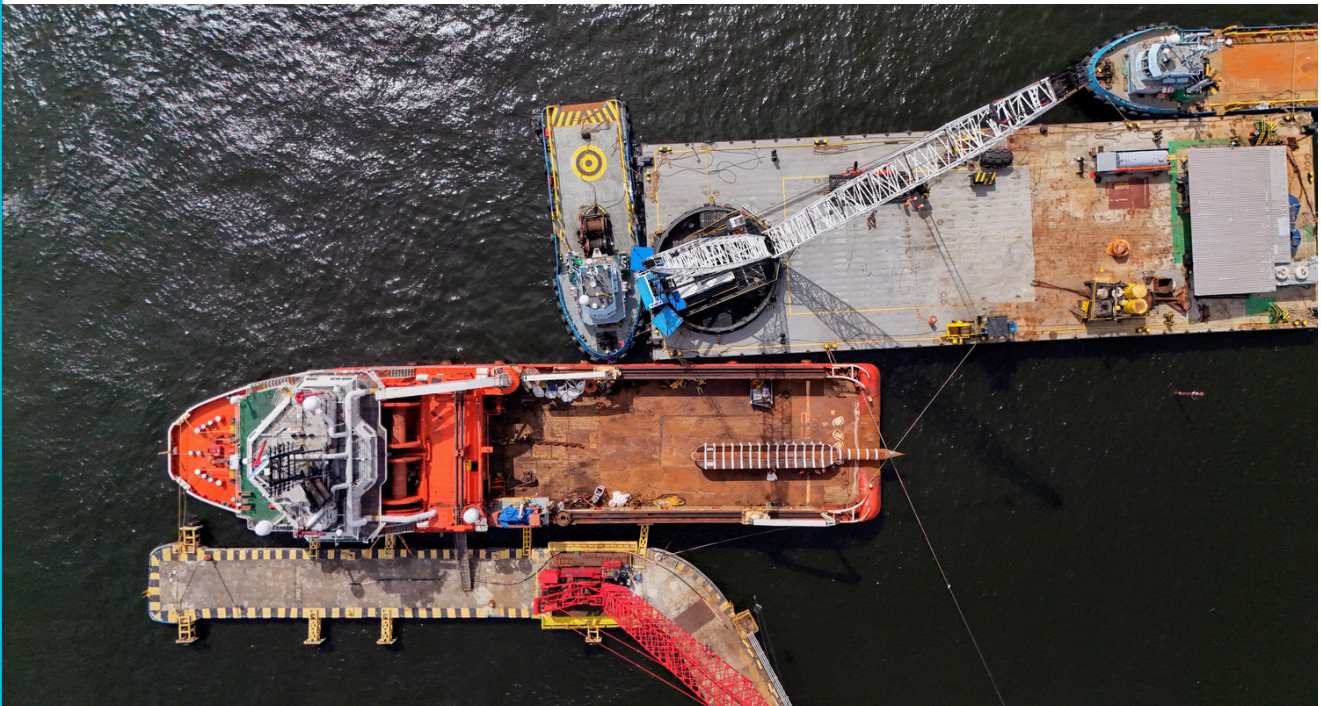


# OFFSHORE SUPPORT BASES

## SERVICES AND PRICES STRUCTURE



**A. BERTHING [48H NOTICE]**

SERVICE DESCRIPTION	PRICES (R\$)
<b>A.1.</b> Berthing - 24 hours	R\$ 22,420.00 / vessel

**B. QUAY / BACK AREA OPERATION**

SERVICE DESCRIPTION	PRICES (R\$)
<b>B.1.</b> Quay crane	R\$ 1,975.20 / hour
<b>B.2.</b> Containment boom service [R\$ / vessel]	Upon consultation
<b>B.3.</b> 2.5 tons Forklift, with operator	R\$ 229.20 / hour
<b>B.4.</b> 4 tons Forklift, with operator	R\$ 343.20 / hour
<b>B.5.</b> 7 tons - Forklift, with operator	R\$ 594.00 / hour
<b>B.6.</b> 16 tons - Forklift, with operator	R\$ 861.60 / hour
<b>B.7.</b> Aerial work platform	R\$ 373.20 / hour

**Note:** Minimum equipment usage: 3 hours.

**C. PERSONNEL**

SERVICE DESCRIPTION	PRICES (R\$)
<b>C.1.</b> Operations Supervisor	R\$ 457.20 / hour R\$ 916.80 / overtime hour
<b>C.2.</b> Safety Technician	R\$ 244.80 / hour R\$ 489.60 / overtime hour
<b>C.3.</b> Operations Foreman	R\$ 208.80 / hour R\$ 418.80 / overtime hour
<b>C.4.</b> Operations Assistant	R\$ 195 / hour R\$ 390 / overtime hour

**Note:** Minimum personnel usage: 3 hours.

**D. TANK CLEANING**

<b>SERVICE DESCRIPTION</b>	<b>PRICES (R\$)</b>
<b>D.1.</b> Fluids / bulk	Upon consultation
<b>D.2.</b> Cement / fuel	Upon consultation

**E. INTEGRATED WASTE MANAGEMENT [6]**

<b>SERVICE DESCRIPTION</b>	<b>PRICES (R\$)</b>
<b>E.1.</b> Class I	Upon consultation
<b>E.2.</b> Class II-A	Upon consultation
<b>E.3.</b> Class II-B	Upon consultation

**F. PORT AREA [RIO DE JANEIRO AND NITERÓI]**

<b>SERVICE DESCRIPTION</b>	<b>PRICES (R\$)</b>
<b>F.1.</b> Open storage area	R\$ 95.53/ m <sup>2</sup> / month
<b>F.2.</b> Enclosed storage area	R\$ 132.13/ m <sup>2</sup> / month
<b>F.3.</b> Storage area for chemical products	R\$ 199.83/ m <sup>2</sup> / month